

## Single-Sided PVC Foams (SBV, SGV, SWV)

### Product Description

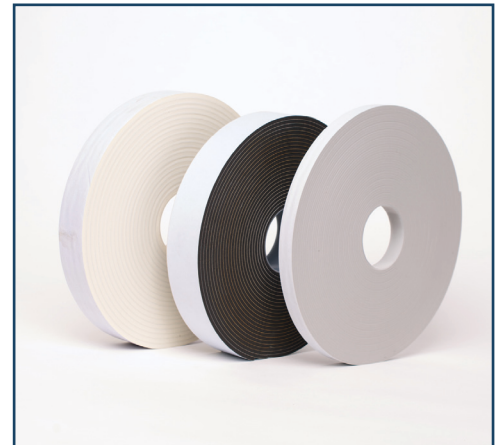
Premier foam sealants are manufactured from expanded PVC in a range of densities. They are essentially closed cell structures coated with a pressure sensitive acrylic adhesive and require 33% compression to create an air seal. They are available in rolls, logs and gasket form.

### Features

- Slit to order – many widths and thicknesses available
- Flexible and conformable
- Clean, economical and easy to use
- SBV20 – low density, black
- SBV25 – medium density, black
- SGV25 – medium density, grey
- SBV50 – high density, black
- SGV50 – high density, grey

### Typical Applications

- Roofing and cladding seals
- Coldroom panels and cold bridging
- Sealing partition walls
- Heating and ventilation
- Rooflights, access doors and gutter joints
- Profiled sheeting
- Prefabricated tanks



*Please note: The above technical information is given as a guide and is based on recent test data obtained under laboratory conditions. Materials should be fully tested by the end user to establish suitability of the product for the intended application. October 2014*

## Single-Sided PVC Foams (SBV, SGV, SWV)

	20 Series	25 Series	50 Series
Adhesive	Acrylic	Acrylic	Acrylic
Colours	Black/White	Black/Grey	Black/Grey
Thicknesses (mm)	Black: 3, 4.5, 6 White: 3.	Black: 1.5, 3, 4.5, 6, 7.5, 9, 10.5, 12 Grey: 1.5, 3, 4.5, 6	Black: 1.5, 3, 4.5, 6 Grey: 0.8, 1.5, 2.5, 3, 4.5, 6
Density (kg/m <sup>3</sup> )	115	130	220
Shore Hardness (00 Scale)	30	35	50
Force to Compress (Ncm <sup>-2</sup> )	2.7	3.2	6.1
Tensile strength (N/cm <sup>2</sup> )	25	30	66
Elongation at Break (%)	>160	>155	>180
Peel Adhesion (N/25mm)	5	5	5
Service temperature	-30°C to +70°C	-30°C to +70°C	-30°C to +70°C
Application temperature	+10°C to +40°C	+10°C to +40°C	+10°C to +40°C
UV Resistance	Excellent	Excellent	Excellent
Fungi resistance	Excellent	Excellent	Excellent
Weather resistance	Excellent	Excellent	Excellent
Shelf life	2 years	2 years	2 years

*Please note: The above technical information is given as a guide and is based on recent test data obtained under laboratory conditions. Materials should be fully tested by the end user to establish suitability of the product for the intended application. October 2014*